



Have you experienced a brain injury? Has someone in your family experienced a brain injury? Research participants needed for exciting new research!

What is the research about?

We are interested in families experiences of brain injury. We would like to find out about:

- How the brain injury has shaped your family.
- How your family has managed after the brain injury.
- The support you and your family have accessed.



Who can take part?

Survivors of brain injury and their family members can take part.

Often people think of family as someone you are related to, or live with. We would like you to choose who you have the most significant relationships with. They will be part of your family. At least two family members are needed to take part, including the survivor of brain injury. Up to five family members can take part.

All participants need to be 18 years old or above.

The brain injury needs to have happened more than six months ago.

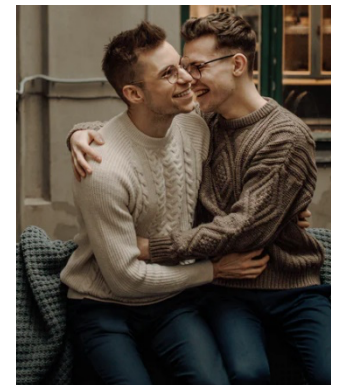
We welcome participants from any background. This includes across the spectrum of ethnicities, religious and spiritual beliefs, abilities, sexualities and gender identities.



What does taking part in this research involve?

It involves two or three family interviews online. The interviews will be roughly one week apart. We might ask you about:

- your family experiences of the brain injury.
- your relationships as a family.
- your experiences of support services and how diversity was considered.



What benefits are there in taking part?

This research will help us understand family life after brain injury.

It will inform how to provide better rehabilitation and family support in the future.



**If you are interested in taking part in, please tell your support staff.
Or email Lucy Olafsen and Siobhan Culley on: braininjuryresearch@surrey.ac.uk.**

If you say you are interested in taking part, we will contact you as soon as possible with more information. We will speak to each person before they decide to take part.

We are flexible with interview times and can consider evenings and weekends.

Study recruitment ends 30/11/21.